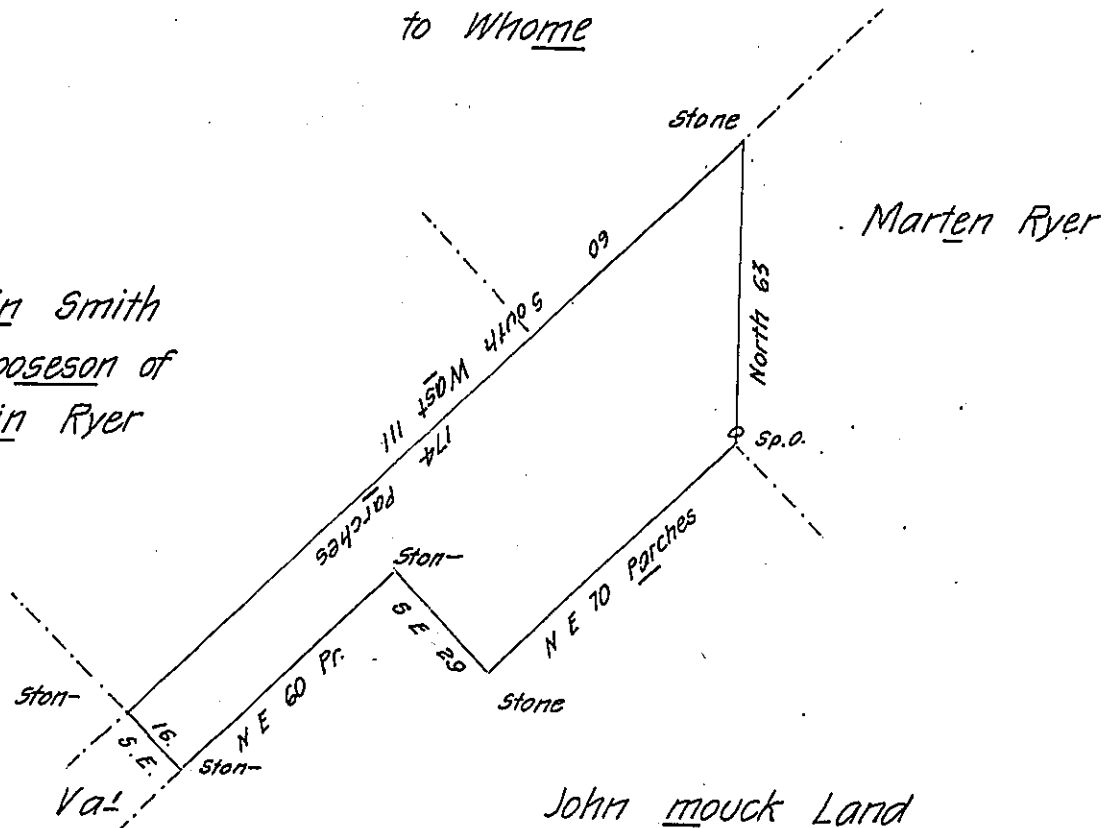


Surveye- Land
is not open
to Whome

Christein Smith
Land now poseson of
Martein Ryer



By Virtue of a Warrant dated the 18th day of april 1759
Surveyed the 3-day of may 1760 for Martein Royer the above discribed
tract of land Situated in Molberer township in the County of philadelphi-
Conteining thirty acres and 111 Parches with the Allowance of 6 per Cent

IN TESTIMONY that the above is a copy of the original remaining on file in
the Department of Internal Affairs of Pennsylvania, made
conformably to an Act of Assembly approved the 16th day of
February, 1833, I have hereunto set my Hand and caused
the Seal of said Department to be affixed at Harrisburg,
this.....eighth.....day of.....August.....1906

Grace J. Brown
Secretary of Internal Affairs.